

Loadbreak Apparatus Connectors

200 A 15 kV Class Insulated Protective Cap

GENERAL

The Cooper Power Systems RTE® Insulated Protective Cap is an accessory device designed to electrically insulate and mechanically seal loadbreak bushing interfaces. When mated to a loadbreak product and the drain wire is attached to ground, the Insulated Protective Cap provides a fully shielded, submersible insulating cover for energized bushings. The cap can be used for permanent or temporary installation on bushings, junctions or feedthru devices that meet the requirements of ANSI/IEEE Standard 386.

INSTALLATION

No special tools are required. A shotgun stick tool is used to place the protective cap on an exposed bushing interface. Refer to Installation Instruction Sheet S500-21-1 for details.

PRODUCTION TESTS

Tests are conducted in accordance with ANSI/IEEE Standard 386-1995.

- ac 60 Hz 1 Minute Withstand – 34 kV
- Minimum Corona Voltage Level – 11 kV

Tests are conducted in accordance with Cooper Power Systems requirements.

- Physical Inspection
- Periodic Dissection
- Periodic Fluoroscopic Analysis

TABLE 1
Voltage Ratings and Characteristics

Description	kV
Standard Voltage Class	15
Maximum Rating Phase-to-Phase	14.4
Maximum Rating Phase-to-Ground	8.3
ac 60 Hz 1 Minute Withstand	34
dc 15 Minute Withstand	53
BIL and Full Wave Crest	95
Minimum Corona Voltage Level	11

Voltage ratings and characteristics are in accordance with ANSI/IEEE Standard 386-1995.



Figure 1.
Insulated Protective Cap electrically insulates and mechanically seals loadbreak bushing interfaces.

ORDERING INFORMATION

To order the 15 kV Class Insulated Protective Cap Kit, refer to Table 2.

TABLE 2
Insulated Protective Cap Kit

Description	Catalog Number
Protective Cap	LPC 215

Each kit contains:

- Protective Cap with stranded copper ground wire
- Silicone Lubricant
- Installation Instruction Sheet

Features and Detailed Description

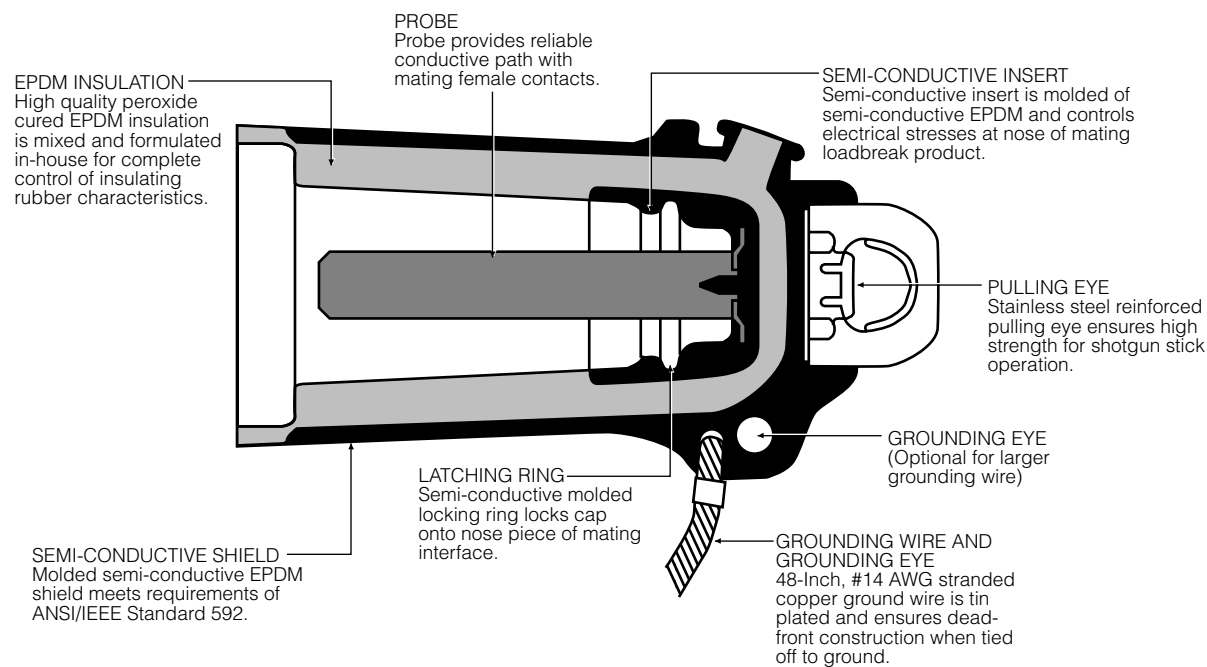


Figure 2.
Illustration shows construction of insulated protective cap.

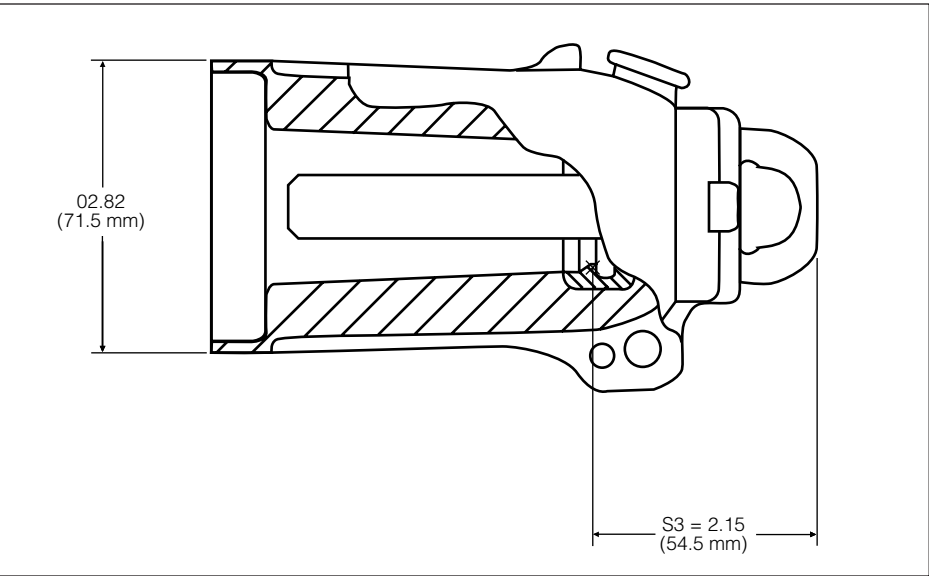


Figure 3.
15 kV Insulated Protective Cap profile and stacking dimensions.