

250 A Apparatus Bushings - Interface A

DB250
DB250S
DB250L

Electrical Apparatus
I550-15



Figure 1.
DB250 Deadbreak Apparatus Bushing.

APPLICATION

- For oil-insulated (mineral oil, Envirotemp™ FR3™ fluid or silicone oil) apparatus, including switchgear, transformers, and capacitors.
- System voltage up to 24 kV.
- Continuous Current 250 A.
- For indoor and outdoor installations.
- Mounting in vertical or horizontal position.

STANDARDS

- Meets the interface requirements of CENELEC 50180, IEEE Std 386™ standard, DIN 47636, EDF C33-051, and others.
- Has been tested with mating parts to IEC 60502-4 and CENELEC HD 629.1 S2.

QUALITY

- 100% Production Tests
- Periodic X-Ray Analysis

TABLE A
Electrical Ratings

Maximum System Voltage (Um)	24 kV
Impulse Withstand	125 kV
AC Withstand	54 kV
Continuous Current	250 A
Overload (8 hrs. Max.)	300 A
Short Circuit Withstand 1 sec. (rms sym.)	12.5 kA

RELATED PRODUCTS

- Mates with the following products:

DE250 Elbow

DS250 Straight

DRC250 Receptacle Cap

PACKAGING

- Supplied in a box of three, approximate weight 4 kg.

Features and Detailed Description

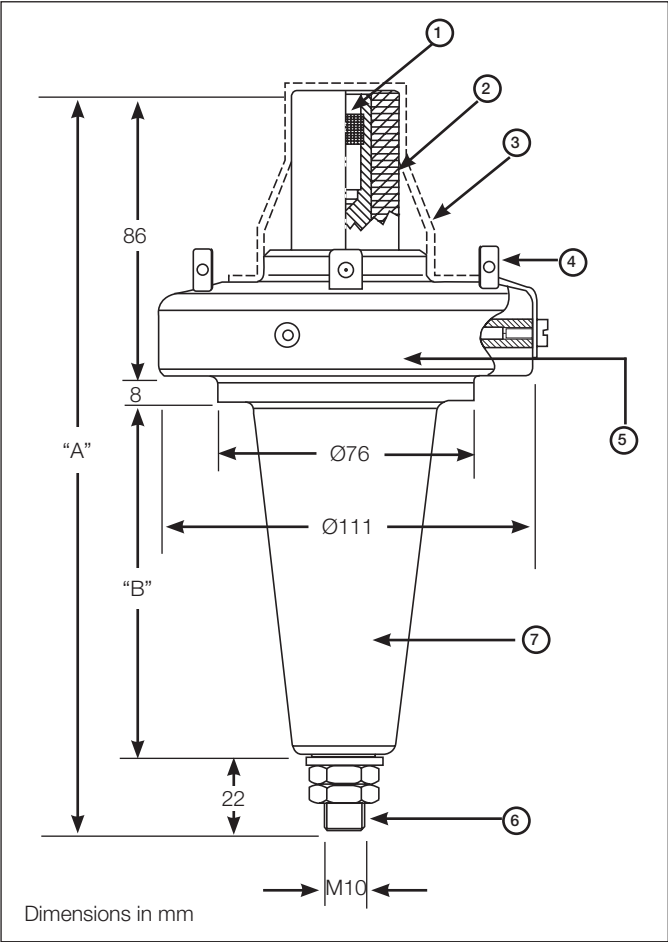


Figure 2.
Section View DB250 Bushing.

TABLE B
Dimensions

Bushing Catalog No.	"A" (mm)	"B" (mm)
DB250 (standard)	224	108
DB250S (short)	189	73
DB250L (long)	284	168

ORDERING INFORMATION

To order, simply specify the catalog number with the required shank length from table B. Gasket is included.

Fixings are ordered separately, as shown below:

TABLE C
Fixings

Type of Clamp	Catalog Number	Figure
DIN 42538	BC-D-250	4
NFC 52-453	BC-N-250	5

- 1. Contact**
Plated multi-point contact accepts the pin contact of the mating connector.
- 2. Interface**
The interference fit between the bushing and the connector prevents the entrance of moisture and contamination.
- 3. Shipping Cap**
The cap prevents contamination of the interface before energization.
- 4. Bail Tabs**
Attachment points for the bail of the mating connector.
- 5. Internal Screen**
The screen controls electrical stress. An earthing plate for connection to the screen is supplied.
- 6. Central Conductor**
The copper conductor has an M10 thread for the apparatus connection.
- 7. Moulded Epoxy Resin Body**

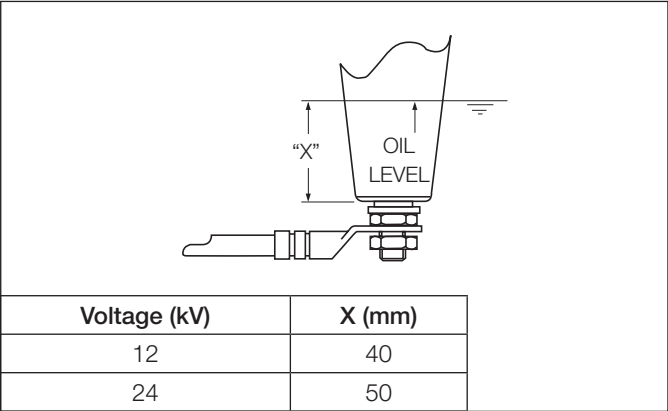


Figure 3.
Minimum oil level.

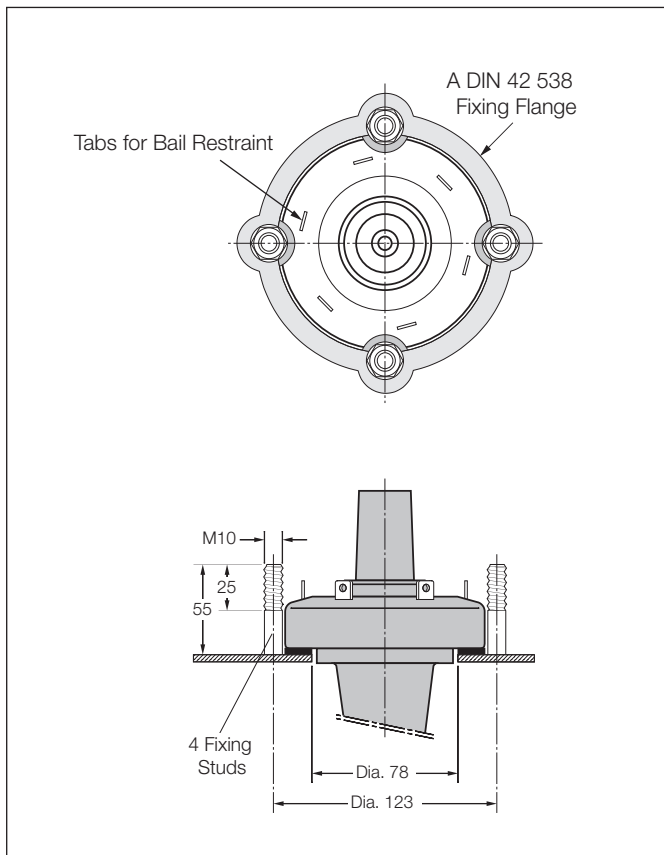


Figure 4.
Fixing BC-D-25 (German Standards).

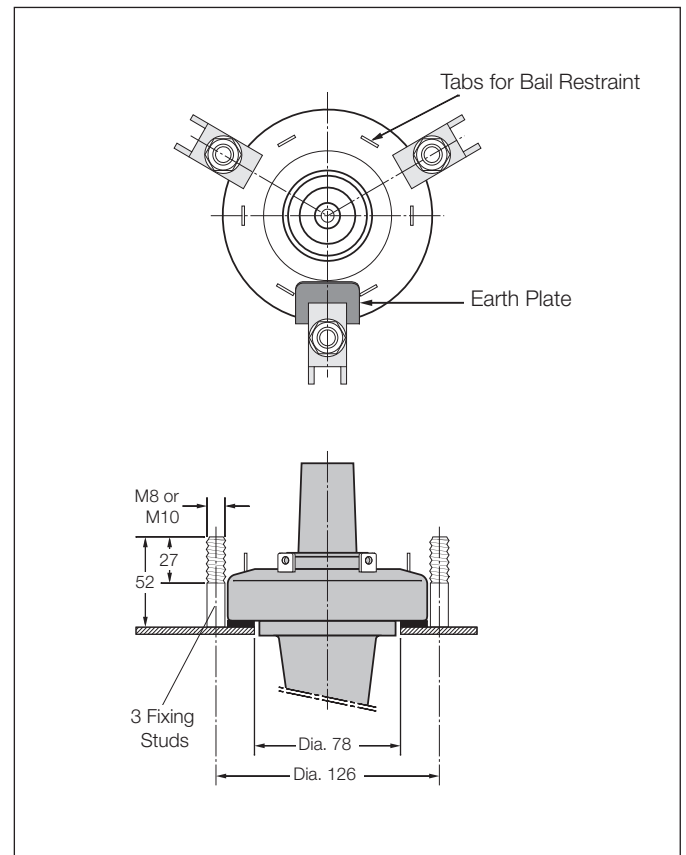


Figure 5.
Fixing BC-N-250 (French Standards).

