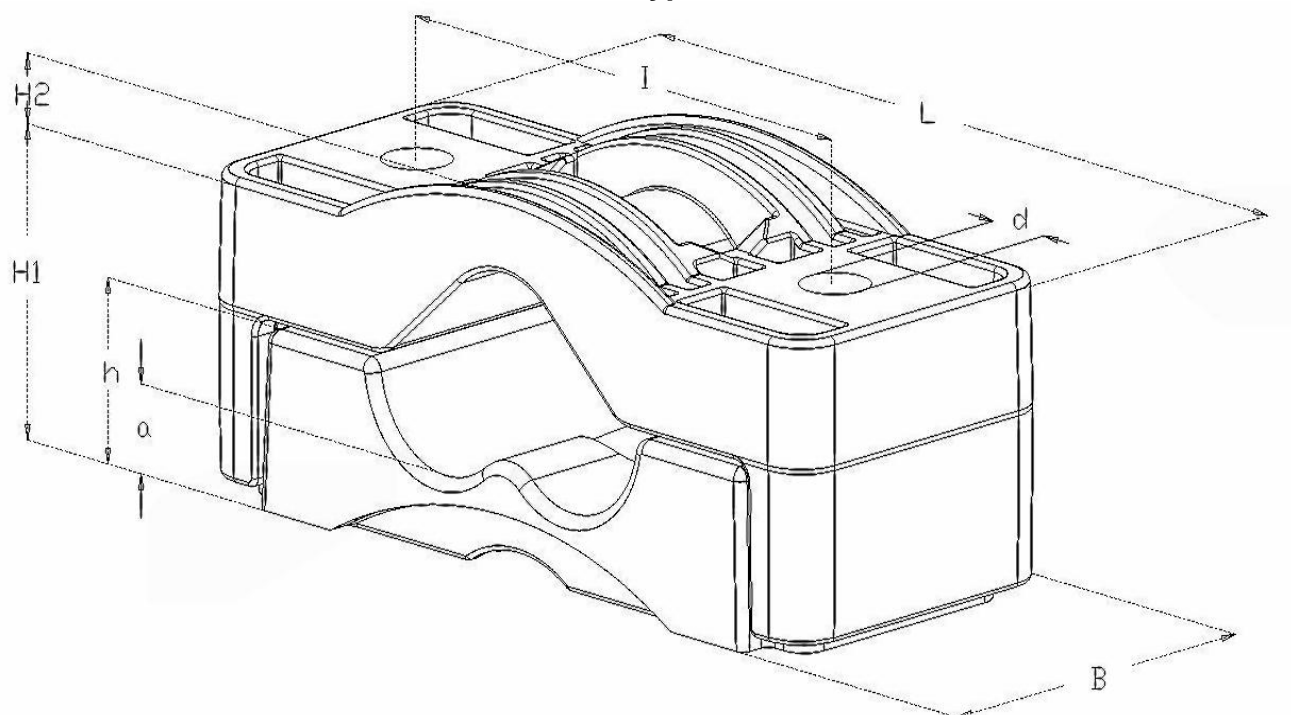


Dutchclamp®

TRIPLE types



| Dimensions in mm | | | | | | | | | |
|------------------|---------------------|-----|-----|-----|------|-----|----|----|------|
| Type | D ø | L | B | I | d | H1 | H2 | h | a |
| TRIPLE 27-38 | 3x 27 - 38 | 180 | 75 | 125 | 15.5 | 63 | 12 | 35 | 16.5 |
| TRIPLE 38-51 | 3x 38 - 51 | 195 | 80 | 145 | 15.5 | 84 | 16 | 45 | 20 |
| TRIPLE 51-69 | 3x 51 - 69 | 220 | 85 | 170 | 15.5 | 109 | 21 | 58 | 26 |
| TRIPLE 69-90 | 3x 69 - 90 | 252 | 90 | 215 | 15.5 | 134 | 29 | 72 | 30 |
| TRIPLE 90-118 | 3x 90 - 118 | 321 | 100 | 270 | 15.5 | 180 | 27 | 89 | 33 |
| Type | Mechanical strength | | | | | | | | |
| TRIPLE 27-38 | 35.900 Nm | | | | | | | | |
| TRIPLE 38-51 | 39.800 Nm | | | | | | | | |
| TRIPLE 51-69 | 69.900 Nm | | | | | | | | |
| TRIPLE 69-90 | 56.700 Nm | | | | | | | | |
| TRIPLE 90-118 | 54.300 Nm | | | | | | | | |

Contact : Jeff Plumley
 Company : DT Jointing Solutions Ltd
 Phone : 027 281 6161
 E-mail : jeff@dtjointingsolutions.co.nz
 Site : www.dtjointingsolutions.co.nz